

The Community Players of Salisbury
Presents



MOON
OVER
BUFFALO

Directed By
Sharon Benchoff

by
Ken Ludwig

April 22 - 8pm

April 23 - 2pm & 8pm

April 29 - 8pm

April 30 - 2pm



Wor-Wic Community College

Guerrieri Center Auditorium

www.communityplayersofsalisbury.org

EASTERN SHORE PODIATRY

Congratulations to the Cast & Crew of Moon Over Buffalo



Dr. Peter Cuesta Dr. James Rano

**11021 Nicholas Lane Suite 6
Ocean Pines, MD 21811**

**540 Riverside Drive Suite 9
Salisbury, MD 21801**

**410-208-4878
www.darnfeet.com**

236th
Production

78^h
Year

Community Players of Salisbury, Inc.
presents

Moon Over Buffalo

Written by

Ken Ludwig

Directed by

Sharon Benchoff

Wor-Wic Community College

Friday, April 22, 2016 at 8:00 PM

Saturday, April 23, 2016 at 2:00 PM & 8:00 PM

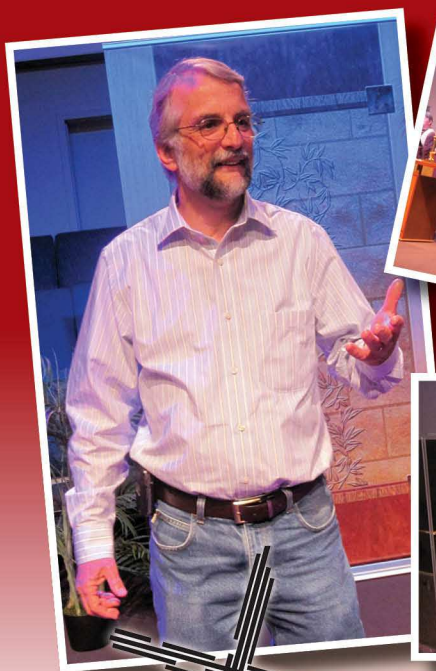
Friday, April 29, 2016 at 8:00 PM

Saturday, April 30, 2016 at 2:00 PM

Presented through special arrangement with
Samuel French, Inc.
235 Park Avenue South
Fifth Floor
New York, NY 10003

*This production was made possible, in part, by a grant from the
Salisbury Wicomico Arts Council, awarded by the
Maryland State Arts Council and the National Endowment for the Arts.*

Where
EVERYONE
is welcome



a church called
Christ
Christ United Methodist Church

Helping people relate to God in a "life-changing way."

410.742.5334 • www.christsby.com



211 Phillip Morris Dr., Salisbury, MD

Services on Saturdays - 6pm & Sundays - 8:30am, 9:45am & 11am

Community Players' President's Message

Welcome to Community Players and *Moon Over Buffalo*. I read the script for the show last year and immediately loved it. This play is hilarious. I was cracking up the whole time I read it. The characters are funny and the plot is simple, but fast and hilarious. I am really looking forward to seeing our talented Community Players' actors bring this show to life. I know you will enjoy the show.

As you leaf through our program, you will see ads for businesses that help support us. We ask that you consider using their services when you need products they have.

As my year as president of Community Players draws to a close, I want to thank everyone for all their support.

Tom Robinson

Community Players Officers

President Tom Robinson
Vice-President Megan Davis
Corresponding Secretary Matt Hatfield
Recording Secretary Sharon Benchoff
Treasurer Charlie Linton
Immediate Past President Rusty Mumford

Board of Directors

Jeff Baer Joe Benamati Pete Cuesta
Steve Culver Judy Hearn Ken Johnson
Kel Nagel Katie Simms Parsons Mary Weise

We're Proud to Help Support

Community Players

**PTL CHIMNEY
SERVICE** Delmar



*Sweeping audiences off
their feet since 1978!*

Certified by Chimney Safety Institute of America
Member of National Chimney Sweep Guild

800-353-7375

410-896-4707

302-846-2561

- Annual Inspections/Sweeps
- Repairs • Stainless Steel Liners & Caps

info@ptlchimney.com

Director's Message

Welcome to our love letter to the theatre.

Moon Over Buffalo takes place primarily in the green room backstage at a theater in Buffalo, New York, in the year 1953. Due to that new invention, television, that is finding its way into living rooms across America, the Hays are playing to less than sold out houses.

Desperate to be back on top again, they have what may be their last chance at fame and fortune. A famous, Oscar winning director will be attending the matinee. What is not certain is if the cast will be performing *Private Lives* (a Noel Coward British comedy set in the 1920s) or *Cyrano de Bergerac* (set in 17th century France) or a combination of the two.

I do hope that you will enjoy this backstage romp as much as the cast, crew and I have had fun bringing it to you.

After the performance, you are invited on stage to take a closer look at our Green Room.

Sharon Benchoff

Don't miss Community Players' next show!

Mary Poppins — June 17-19 & 25-26, 2016

Tickets are available by calling 410-546-0099 or on the web at www.communityplayersofsalisbury.org

Please do not take photographs
or video during our performance.

Please turn all cell phones off or to vibrate.

Please do not text during our performance.

Synopsis

The action takes place backstage at the Erlanger Theatre in Buffalo in 1953. Charlotte and George Hay are on tour with a repertory consisting of *Cyrano de Bergerac* and Noel Coward's *Private Lives*, when they receive word that they might just have one last shot at stardom: Frank Capra is coming to town to see their matinee.

Act 1

A mid-morning in June

15 minute Intermission

Refreshments are available for sale in the lobby

Act 2

Scene One: Two hours later

Scene Two: Immediately following

Scene Three: Two hours later

Moon Over Buffalo Reference Cheat Sheet

Those of you below a certain age may not be familiar with all the references in the play.

Here are some helpful hints:

Cyrano de Bergerac – a real person who lived in 17th century France and a famous play by the same name and based loosely on that real person.

Frank Capra – think Steven Spielberg. Among other American Classics, Capra directed *It's A Wonderful Life* that is shown every year at Christmas.

Ronald Colman – think George Clooney.

Reference Cheat Sheet (Continued)

Cornell – Katherine (Kit) (February 16, 1893 – June 9, 1974) was a famous American stage actress, actually born in Buffalo, NY.

Greer Garson – think Cate Blanchett.

John Gielgud – a renowned British actor whose career spanned 80 years. He was one of the trinity of actors who dominated the British stage for much of the 20th century.

Green Room – The origin of the term is lost to history. One story is that London's Blackfriars Theatre (1599) included a room which happened to be painted green; here the actors waited to go on stage. Some English theatres contained several green rooms, each ranked according to the status and salary of the actor. One could be fined for using a green room above one's station. Another theory states that when players appeared in Stratford-upon-Avon in the sixteenth century, they performed in the medieval Guildhall. The players used the council chamber, adjacent to the Guildhall, as their changing room. This room was known as the Agreeing Room or, in Warwickshire-speak, the "Green" Room.

Lunts – He (Alfred) and his wife, Lynn Fontanne, were the pre-eminent Broadway acting couple of American history.

Ed Sullivan – popular television host who introduced acts (Beatles) to vast American audiences.

George S. Patton – egotistical four star general who commanded the US Seventh Army in World War II.

Mickey Rooney – the reference centers on a series of films made when he was a teenager. The plots revolved around him "putting on a show" in each film.

Ester Williams – a competitive swimmer and actress who made a series of films known as "aquamusicals," which featured elaborate performances with — synchronized diving and swimming.

Loretta Young – made her name in Classic Hollywood as a great beauty.



COMMERCIAL & RESIDENTIAL
410•749•0180
jacobsyardworks@comcast.net

- Professional Grounds Maintenance
- Turf Management
- Landscape Lighting
- Irrigation - Hardscaping
- Landscape Design & Installation

RANDY PARSONS/JACOB PARSONS

OWNER/OPERATORS

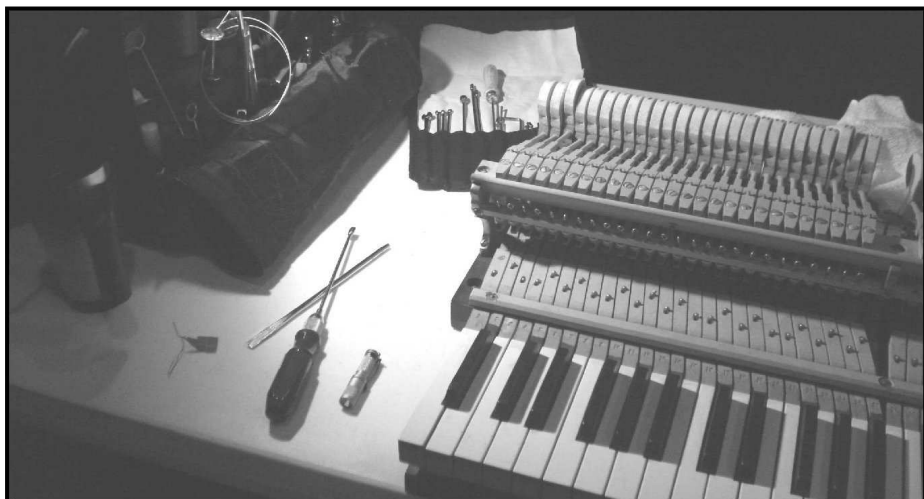
Jacob's Yardworks, LLC

Cast (in order of appearance)

George Hay	Pete Evans
Charlotte Hay	Stephanie Davis
Ethel	Robin Finley
Rosalind (Roz) Hay.....	Megan Davis
Richard	Matt Bogdan
Paul.....	Matt Hatfield
Eileen.....	Lilia Dobos
Howard	Seth Brady
Ambulance Attendant	David Allen

Production Staff

Director	Sharon Benchoff
Assistant Director.....	Matt Hatfield
Producer	Carol Alex
Stage Manager	Cassandra Dasher
Set Design	Ernie Matthews, Sharon Benchoff, Ken Johnson
Lighting Design.....	Travis C. Comegys
Sound Design	Kim Mason, Kel Nagel
Sound	Kim Mason
Set Construction and Painting	Ernie Matthews, Bill Zlakowski, David Allen, Sammy Barnes, Sharon Benchoff, Steve Culver, Cassandra Dasher, Chloe Dasher, Melissa Dasher, Megan Davis, Lillia Dobos, Matt Hatfield, Ken Johnson, Jim King, Christa Kirkendall, Matt Munday, Anthony Rogers, Kim Szentesi-Thomas, Mary Veise
Set Decoration	Debby Nagel, Jean King, Sharon Benchoff
Costume Design	Lynne Bratten, Jenny Tusing
Costume Construction	Carol Alex, Lynne Bratten
Property Mistresses	Jean King, Debby Nagel
Wig, Hair and Make-up Design	Rusty Mumford
House Managers	Carol Alex, Mary Veise
Stage Crew	David Allen, Melissa Dasher
Special Effects.....	David Allen
Publicity	Peter Cuesta
Program Cover, Poster and Sign Design	Kathy Panchyk
Program Advertising	Tom Robinson
Program.....	David and Pat Oberholtzer, Tom Robinson



Have a Piano?

**We will Tune It, Repair It,
Appraise it or Move It**

Need a Piano?

**We rent Grand & Vertical Pianos
on a short-term basis**

 **JoelSmith**
Music

joelsmithmusic.com

joelsmithmusic@comcast.net 410.543.1200

Find Us On Facebook

Who's Who in the Cast

Matt Bogdan (Richard) has been involved with Players for many years, directing such shows such as *My Fair Lady*, *The Music Man*, and *The Odd Couple*. He had major roles in *Les Misérables*, *Tom, Dick and Harry*, and *Who's Afraid of Virginia Wolff?* Matt also directed high school drama for over thirty years. Matt is an adjunct teacher at UMES and is a real estate agent with Century 21.

Seth Brady (Howard) is performing with Players for the first time, but this is far from his first time acting. He is a regular entertainer at dinner theatres and has performed many roles in plays including Captain Hook from *Peter Pan*, Bottom from a *Midsummer Nights' Dream*, the Beast from *Beauty and the Beast*, and numerous others. Despite all this, Seth still has no idea what he's doing onstage or how he even got there.

Megan Davis (Rosalind Hay) is thrilled to be back on stage with Players. While she has spent most of her time backstage, stage managing shows such as, *Fiddler on the Roof*, *The Addams Family*, and *Les Misérables*, you may have caught her onstage in *Vanities* (Mary), *The Foreigner* (Catherine), and *Blithe Spirit* (Elvira). Megan would like to dedicate her performance to her late grandmother, Mona Davis.

Stephanie Davis (Charlotte Hay) is so excited to be a part of *Moon Over Buffalo*. She has participated on and off stage in several Players productions including *Jekyll and Hyde*, *Les Misérables*, *Chicago*, *They're Playing Our Song*, *The Odd Couple*, *Vanities*, and *The Addams Family*. Most of all, Stephanie considers it a privilege to share the stage with such fun and talented people.

Lilia Dobos (Eileen) is thrilled to perform as Eileen in her fifth show with Players. She has done theatre since 9th grade at Mardela High School in shows such as *Once upon a Mattress* and *The Sound of Music*. Recently, you may have seen her as Kathy in *Vanities*, Tzeitel in *Fiddler on the Roof*, and Nora in *Brighton Beach Memoirs*. She gives a special thanks to Sharon and the cast and crew for all of their hard work and her mother, America, for her never-ending support.

Pete Evans (George Hay) is happy to be onstage again with Players, with a fantastic bunch of actors. *Moon Over Buffalo* is full of wonderful new comedic opportunities, and he is enjoying the experience thoroughly. He was last seen as Gomez in *The Addams Family* and was also featured in *Blithe Spirit*, *The Foreigner*, and *Les Misérables*.

Robin Finley (Ethel) has been with Players since 2001. Her first play, directed by Cindy Gore, was *Little Women*. She has appeared in *The Mouse That Roared*, *The Hollow*, *Brighton Beach Memoirs*, *The*



**Proudly Supports
Community Players of Salisbury**

Offices in Salisbury and Berlin, Maryland
and
Seaford and Millsboro, Delaware

Call 410-749-4154
or
Toll Free 877-749-4154

Visit us on the web at
www.peninsulaortho.com

Who's Who in the Cast (Continued)

Foreigner, and *The Man Who Came to Dinner*. She was also in *Chicago*, *Jekyll and Hyde*, *Oliver*, and (most recently) in *The Addams Family*. Robin directed *Who's Afraid of Virginia Woolf?* for Community Players and *Five Women Wearing the Same Dress* for Wor-Wic's fundraiser for "Relay for Life". She was the choreographer for *Les Misérables*. Robin wants to thank her family for their support.

Matt Hatfield (Paul/Assistant Director) is very excited to be a part of another Players' show. He has been seen before in *The Addams Family* (Lucas), *Fiddler on the Roof* (Motel), *Brighton Beach Memoirs* (Eugene) and *The Foreigner* (Ellard). He is so happy to be able to be on both sides of the table and thanks Sharon for allowing him to do both. Matt is also thankful for such a wonderful cast and crew and everything they've done.



Finley Appraisals, P.A.

Providing residential appraisals
for local homeowners and
mortgage lenders since 1988.

Gary & Robin Finley

410-546-0094 fax 410-860-9774

finleyappraisals@comcast.net

www.finleyappraisals.com

Established 1983

**GILLIS
GILKERSON**

**32 Years
and Building
Thank you
Delmarva!**

Award winning Gillis Gilkerson,
established in 1983, thanks all of our
customers and community partners for
over 32 years on the Delmarva Peninsula.

**FROM OFFICES TO INDUSTRIAL,
FROM RENOVATIONS TO
BUILD-TO-SUITS, OUR
PORTFOLIO IS 1,400
PROJECTS DEEP AND GROWING!**

**VOTED
Best
Commercial
Builder!
2015**

Your Local Construction Management and General Contracting Professionals

212 W. Main St. Ste 305 Gallery Building Salisbury, MD 21801 410-749-4821 www.gillisgilkerson.com

Who's Who Behind the Scenes

Sharon Benchoff (Director) began her calling in the theatre when she directed her fourth grade classroom production of the *The Princess and the Pea*. Since that time (she is not saying how many years) Sharon earned a bachelor's degree in Theatre from Salisbury State under the tutelage of Dr. Leland Starnes. From there she has worked for over thirty years with Players. She designed lighting for numerous shows including *Jekyll & Hyde*, *Chicago* and *The Wizard of Oz*. Directing credits include *Wait Until Dark*, *Laughing Stock* and *Tom, Dick and Harry* and *Les Misérables*. Sharon has also served as both Board member and Officer for Community Players. She wishes to thank her cast and crew for making *Moon Over Buffalo* a true treat to direct.

David Allen (Special Effect) has been involved with Players for twenty-two years. And he's still going strong. He enjoys working behind the scenes on set construction, lights, sound and more. If you see him on stage there is most likely a problem or a need for a walk-on part (Ambulance Attendant).

Lynne Bratten (Costume Design and Construction) has created and coordinated costumes for Players since 1984. Her recent productions include *The Addams Family*, *Fiddler on the Roof*, *Blithe Spirit*, *The Man Who Came to Dinner* and *Jekyll and Hyde*. She also creates costumes for Rock and Roll Revival and productions at Wor-Wic Community College. She is a retired educator who now owns and manages rental properties. She is thrilled to be collaborating with her daughter on historically accurate costume creations.

Travis Comegys (Lighting Designer and Fencing Instructor) marks his seventh show as lighting designer for Players. Past productions include *The Odd Couple*, *Laughing Stock*, *Tom, Dick and Harry* and *Les Misérables*. He has designed and run lighting for several Seaside Ballet productions, as well as Dessert Theatre and Relay for Life for Wor-Wic Community College. Travis is a graduate of SU with degrees in World History and Secondary Education.

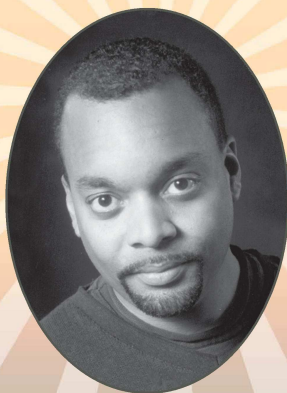
Cassandra Dasher (Stage Manager) is a newcomer to Players. Cassandra previously worked stage crew on *The Addams Family*,

The Salisbury Chamber Singers

under the direction of Phyllis Oldham

PRESENT

Songs for the Spirit



FEATURING

John Wesley Wright, Tenor

Wicomico Presbyterian Church • 129 Broad Street, Salisbury, MD

FRIDAY, MAY 6 AT 7:30 PM

SATURDAY, MAY 7 AT 3:00 PM

TICKETS AVAILABLE AT:

**Trinity UMC & Wicomico Presbyterian Church and
Online: www.salisburychambersingers.org -OR- Call: 410-749-8374**

Adults: \$15 ■ Seniors (60+): \$10 ■ Students: Free



Who's Who Behind the Scenes (Cont.)

as well as leading the art and tech department of summer amazing cast and crew drama camp for several years. She is thrilled at the opportunity to work with such an amazing cast and crew.

Matt Hatfield (Paul/Assistant Director) is doing a dual role. See his bio under "Who's Who in the Cast".

Kim Mason (Sound) has been part of the Sound Team for eleven Players' productions including both productions of *Wizard of Oz*, *Meet Me in St. Louis*, *High School Musical*, *Jekyll & Hyde*, *Les Misérables* and *The Addams Family* and five productions at The Salisbury School including *South Pacific*, *Oklahoma!*, *Sound of Music*, and *Chitty, Chitty, Bang, Bang*.

Jenny Tusing (Costume Design) has assisted in costuming productions for Players, Wor-Wic Community College, Rock and Roll Revival, and the Arabian Lights Dance Troup. She has a variety of theatre and dance performance credits from around the Salisbury area.

Special Acknowledgements

Christ United Methodist Church
Jones & Dryden Truck Rental
WorWic Community College

We wish to thank those individuals who also contributed to this production, but we have inadvertently omitted them.

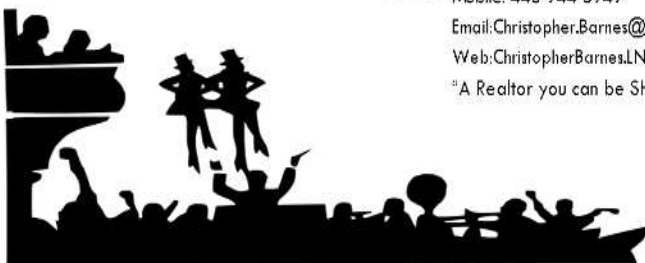
Experience at Performing

LONG & FOSTER
REAL ESTATE
LUXURY HOMES
CHRISTIE'S
INTERNATIONAL REAL ESTATE

11701 Coastal Highway
Ocean City, MD 21842
410-524-1700



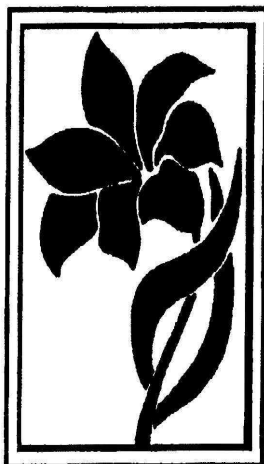
Christopher "Chris" Barnes, REALTOR
Mobile: 443-944-5949
Email: Christopher.Barnes@LNF.com
Web: ChristopherBarnes.LNF.com
"A Realtor you can be SHORE of"



I've been performing on the stage with Community Players for over 30 years! What a tremendous group of talented volunteers they are!! I take a lot of pride in my on stage performance as well as my REAL ESTATE performance throughout Wicomico, Somerset and Worcester Counties. If you have questions about REAL ESTATE, call or email me. I truly am
"A Realtor you can be SHORE of"



**CONGRATULATION TO THE COMMUNITY PLAYERS
OF SALISBURY ON YOUR 78TH SEASON**



HOLLOWAY
FUNERAL HOME

Professional Association

Since 1883



SELECTED
Independent

FUNERAL HOMES®

501 Snow Hill Road, Salisbury, Maryland 21804
410-742-5141 Fax 410-749-3278



Rick Dawson

D.D.S., LLC

FAMILY DENTISTRY

551 Riverside Drive Salisbury, MD 21801

410.546.7770 www.rickdawsondds.com

**Dr. Rick Dawson & Staff
Would like to say
“Congratulations”
To all their patients
And Community Players**

denisew7530@yahoo.com

williamsmkt.com



Call me for all your ... LIFE, HEALTH, AUTO
and HOMEOWNERS insurance needs!

Gamee Elliott

923 Eastern Shore Drive Salisbury, MD 21804
410-749-4725 www.gameelliott.com

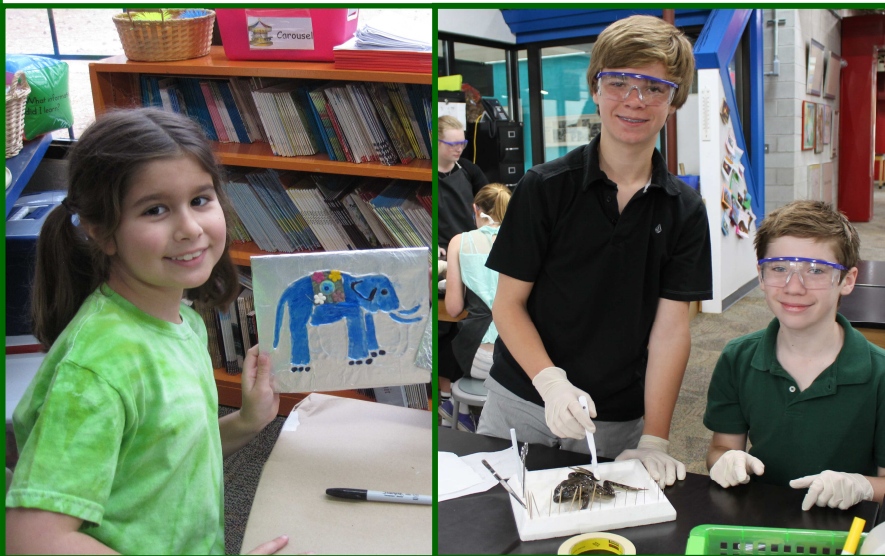
Experiential Learning

The Salisbury School is a pre-K through Grade 12 college preparatory school where students are encouraged to express themselves and to strive for personal excellence, intellectually, artistically and athletically.

As our children prepare to take on the global world, TSS enriches and engages students with computer programming, STEM projects and Mandarin classes.

100% college acceptance.

Call today to arrange a tour or visit us online to discover an educational experience like no other.



 the salisbury school

Call 410 742 4464 X 123 or visit www.thesalisburyschool.org

Gray Piano Service

Since 1977

Harry A. Gray, Tuner/Technician



- Tuning
- Regulation
- Repair

Factory-certified installer:
Piano Life Saver
climate systems

Salisbury, MD 21804

Phone: 410.546.0307

Cell: 443.783.4340

e-mail: harry_gray@verizon.net

PKS & Company, P.A.

Pigg, Krahl & Stern

**Certified Public Accountants
& Advisors to Business**

PKS Investment Advisors LLC

PKS *gets results!*

- **Accounting & Auditing**
- **Strategic Tax Planning**
- **Medical Practice Consulting**
- **Business Valuation**
- **Payroll & Bookkeeping**
- **Estate & Trust Planning**
- **Fraud & Forensic Services**
- **Personal Financial Planning**
- **Employee Benefit Plan Audits & Administration**
- **Business Management Advisory Services**

Salisbury, MD
Ocean City, MD
Lewes, DE
1.800.274.2564
www.pkscpa.com

TIRED OF STRESSFUL TRIPS TO THE VET?

Let

Animal House Calls

Treat Your Dogs & Cats In The Comfort Of Your Home

Dr. Barbara Wygal

WE TAKE THE STRESS & INCONVENIENCE OUT OF VET APPOINTMENTS BY COMING TO YOU



**Speak Directly To
The Veterinarian**

- Preventative Care
- Vaccinations
- Medical Workups
- Laboratory Diagnostics
- Microchipping
- All Medications
- No Chance Of Contracting Other Illnesses



www.animalhousecallsmd.com

410-543-1398



Boone's Tunes of Delmarva

Salisbury, Ocean Pines, & Delmar



BABY & TODDLER CLASSES
PRE-PIANO CLASSES
GROUP PIANO CLASSES
PIANO LESSONS
VOICE LESSONS



Susan Boone Upton, Director ♪ Degreed, Licensed, Certified
Nurturing the love of music for all ages, infant through adult



Musikgarten Exemplary Award

Multiple State Vocal Winners

Offering for students:

National Piano Guild

Royal Conservatory Assessments

National Music Theory Honor Roll



www.boonestunesofdelmarva.com

443-235-9839



**Manage your accounts, anywhere,
anytime. With FBW Mobile from the
Farmers Bank of Willards**



**Now offering a
New Mobile
Banking App**



Farmers Bank
OF WILLARDS

Specializing in:

- *Wedding Cakes*
- *Fondant Cakes*
- *Sheet Cakes*
- *Gourmet Cupcakes*



CAKE
ART
&
CUPCAKE CAFÉ

443.859.8147

124 N. Division Street, Salisbury, MD 21801
cakeartmd@yahoo.com
www.cakeartmd.com



unlimited
Preschool thru Adult

Ballet • Tap • Jazz

Barbara S. Hanson, Owner

108 S. Saratoga Street
Salisbury, MD 21804

410-543-2012

danceunlimited@comcast.net



Goin' Nuts
Cafe

Full Menu plus Specials
starting at 11 AM

Happy Hour plus
Late Night Lounge Specials

Also available for large parties!
410-860-1164

947 Mt. Hermon Road
Salisbury

SALISBURY

CHRISTIAN SCHOOL

50 years of
excellence in education,
serving Pre-K3
through grade 12



Visit our
OPEN HOUSE
May 19
9:00am, 7:00pm



WOODY'S
PEST CONTROL

410.546.1544

www.WoodysPest.com

90 years!
 1925-2015
AVERY HALL
 INSURANCE SOLUTIONS FOR TODAY'S WORLD



Salisbury, MD
 410.742.5111

Easton, MD
 410.822.7300

Bridgeville, DE
 302.337.8231

Seaford, DE
 302.629.4514



www.averyhall.com



INSPIRING *Smiles* THROUGH *Delicious* EXPERIENCES

Arby's® Roast Beef

NEW Sliders Menu

Premium Shakes

Breakfast* • Lunch • Dinner

Three Salisbury locations to serve you!

1111 S. Salisbury Blvd. • 116 Ward Street*

2350 N. Salisbury Blvd.*

HOLLOWAY TOURS



Holloway Transit and Tours is a family owned and operated charter bus company providing deluxe motor coach charters for single-day trips, multi-day trips, guided tours, school field trips, athletic events, and local group day trips.


Our coaches are ideal for church groups, retirement communities and schools, as well as civic and private groups.

Holloway Transit and Tours

32264 Mount Hermon Road
Salisbury, Maryland 21804
(410) 742-1449




In Memory of
Ruth E. Little and Charles F. Little
By their daughter, Joanne E. Little




**FIRST SHORE
FEDERAL**

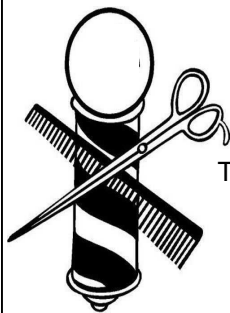
410-546-1101
 106 S. Division St., Salisbury MD
www.firstshorefederal.com

- Checking/Savings
- CDs/Retirement Accounts
- Lot/Construction Loans
- Conventional
- 2nd Home/Investment
- Mobile Home Loans

Member 
FDIC



<p>MEXICAN MONDAY \$2 TACOS/\$3 MARGARITAS /\$9.99 BURRITOS</p> <p>TUESDAY \$6.99 APP NIGHT KIDS PM & TEAM TRIVIA 7PM</p>	<p>WEDNESDAY \$10.99 RIB NIGHT</p> <p>THURSDAY \$11.99 STEAK NIGHT</p>
<p>219 N. Fruitland Blvd. Fruitland, MD 21826 410-749-6961 www.adamsribsfruitland.com</p>	



Martye Cirioni

Barbering

Thursday & Friday 8 AM - 4 PM Saturday 7:30 AM - Noon

Appointments or Walk-Ins 410-749-6812

Hamill's Barber Shop
1023 Eastern Shore Drive Salisbury, MD 21804

Delmarva

Investment Services

John Bennish

Assistant Vice President - Delmarva Investment Services
Investment Executive - Infinex

2245 Northwood Drive, Salisbury, MD 21801

410-548-2623 - Fax 410-548-1328 - Toll Free 866-440-2623

.Not a deposit
.Not FDIC-Insured

.Not insured by any Federal
government agency

.Not guaranteed by the bank
.May go down in value

Securities and insurance offered through **INFINEX INVESTMENTS, INC.** Member FINRA/SIPC.

Delmarva Investment Services is a trade name of The Bank of Delmarva. Infinex and The Bank of Delmarva are not affiliated.

DANCE WEAR ETC

1506 S SALISBURY BLVD
SALISBURY MD 21801
www.dancewear-etc.com

COURT PLAZA
410.742.3316
dancewear@yahoo.com



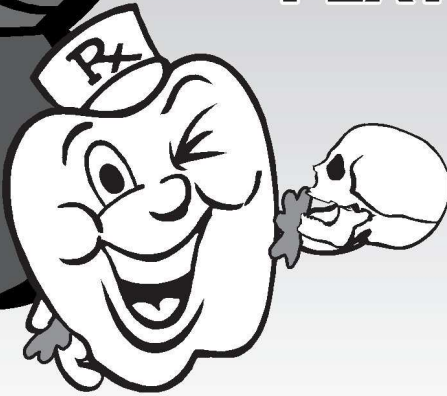
We wish *all* the performers
a wonderful show!

*BODYWEAR*LEGWEAR*
SHOES FOR ALL DISCIPLINES
JEWELRY & ACCESSORIES

Congratulations to Community Players!

APPLE DISCOUNT DRUGS

Proudly Supports
**COMMUNITY
PLAYERS**



Rt. 13 S. & Cedar Ln.

FRUITLAND
410-749-8401

314 Franklin Ave.

BERLIN
410-641-3130

1210 Nanticoke Rd.
Pecan Square

SALISBURY
410-543-8401

*Bon
Appétit*
RESTAURANT

312 High Street, Seaford Delaware
302-629-3700

The logo for Bon Appétit Restaurant features a decorative border with a central illustration of a braided loaf of bread. The text 'Bon Appétit' is written in a cursive font, with 'RESTAURANT' in a smaller, sans-serif font below it. The address and phone number are listed at the bottom.

**"Quality Detailed Cleaning
From Edge to Edge!"**

**Clean
edge** LLC

- Commercial / Industrial / Residential
- Move-In/Out Specialist
- Floor Scrubbing/Stripping/Waxing
- Post/Final Construction
- Rental Cleaning
- Porter/Building Maintenance Service
- Condo Cleaning
- Office Cleaning
- Office Furniture Steam Cleaning
- Pet Odor Treatments
- Window Cleaning
- Free Estimates



410-548-7118

www.cleandedgeclean.com



Fancy Fingers Nail & Massage Salon

Randa Collins, Owner

925B Mt. Hermon Road Salisbury, MD 21804
410-543-0798 rllcollins0798@aol.com



"Your Hometown Bank"

12 convenient locations to serve you.

Hebron.....410-749-1185
Salisbury - Carroll Street410-742-8526
Salisbury - Quantico Square .410-543-9183
Salisbury - Mt Hermon Rd ...410-546-8118
Salisbury - Riverside Drive ..410-341-6670
Fruitland410-860-4884

Princess Anne..... 410-651-1722
Crisfield410-968-0500
Sharptown 410-883-3121
Vienna.....410-376-3186
Cambridge - Cedar Street..... 410-228-9202
Cambridge - Ocean Gateway 410-228-2440

Visit our website at
www.HebronSavingsBank.com



CATALYST
INVESTMENT ADVISORS

Mason Little

Senior Vice President, Investments

Catalyst Investment Advisory is an independent
brokerage firm that helps clients invest
for the future and prepare for retirement.

1340 Belmont Ave Unit 504 Salisbury, MD 21804
443-944-8682 www.mlittle@wfafinet.com



LANDMARK

INSURANCE & FINANCIAL GROUP

"Large enough to serve you, small enough to care"



- Employee Benefits
- Health & Life Insurance
- Umbrella • Farm
- Auto
- Home & Boat
- Renter's
- Flood
- Business
- Workers' Comp

Princess Anne, MD

410-651-2110

www.landmarkinsuranceinc.com



YOUR HOME IS YOUR STAGE

*CALL ME FOR A
"SELL OUT" PERFORMANCE*

NANCY ALTHAUS, REALTOR®
Your Trusted Advisor

410-726-6080



LONG & FOSTER REAL ESTATE, INC.

410-546-3211 x1323

**Best Wishes to
Community
Players
on another
stellar year!**



410-546-1215



**CHARLES
BROWN
GLASS CO.**

**SERVING
DELMARVA
SINCE 1959**

www.charlesbrownglass.com

410-749-3316

THE

HARKINS

Companies

**We are proud to have been the
General Contractor for Community Players!**

General Contracting / Construction Management
Concrete Construction / Ready Mix Manufacturing
Development / Real Estate / Rental Properties

Building. Driving. Listening. Leading.

31400 Winterplace Parkway, Suite 400
Salisbury, MD 21804 410-749-3300



HOLLOWAY & MARVEL, P.A.
CERTIFIED PUBLIC ACCOUNTANTS

105 Milford Street
Salisbury, MD 21804

Office: 410-546-5567
Fax: 410-548-3276

E-Mail: cpa@hmcpeafirm.com

The Eastern Shore Madrigals
present



"1776" is a lively view of the events surrounding
the signing of the Declaration of Independence

Pocomoke High School

June 10, 11, 17 at 7:30 pm

June 12 at 3:00 pm

June 18 at 3:00 and 7:30 pm

Tickets \$12

*Father's Day Ticket Special for June 18th 3 pm show: Fathers' tickets are half price!

Group rate of 10 or more \$10 a ticket!

Tickets available online at www.easternshoremadrigalsingers.com or reserve tickets for pick-up through our email: contact@easternshoremadrigals.com or call 443- 614-0830. Ticket orders will be available when doors open 1 hour before performance. Find more information on our Facebook page "The Eastern Shore Madrigal Singers present: 1776 The Musical" and the Eastern Shore Madrigals website. Tickets outlets: T's Corner. Tickets will be sold at the door if available; reserve your tickets early!

DELMARVA PUBLIC RADIO

WSCL 89.5 Fine Arts & Culture
WSDL 90.7 Rhythm & News

Start Here ... Go Anywhere!



Wor-Wic Community College has been helping people begin their college education and improve their lives since 1975. Call us or check out our website to find out how we can help you take center stage toward a brighter future.

www.worwic.edu • (410) 334-2800

WOR-WIC
COMMUNITY COLLEGE



*3rd Fridays
Arts Grants
Scholarships
School Arts Grants
Instrument Barn
Accent on the Arts
Artists in Residency
Arts Therapy
Classics for a Cause*

**Been
SWAC'd?**



*Join the
Salisbury Wicomico
Arts Council today to create
"Arts for Better Living!"*

www.GetSWAC.org
410-543-ARTS

**SWAC'S
ANNUAL
FUNDRAISERS**

Winter-
**Dining with
The Masters Gala!**
Spring-
Let's Do Lunch Arts!
Summer-
SU MSCA Concert!
Fall-
River City Arts Jam!



- *Wicomico
ArtScape*
- *SWAC-PAC
TV Show*
- *Arts Advocacy*
- *Arts Partnerships*



Our Patrons 2015-2016

Legacy Club

Tom & Susan Robinson

Guardian

Tom & Lydia Welsh

Benefactor

Lloyd & Alice Foard
Jim & Jean King
Kel & Debby Nagel

Brian & Tammy Kilgore
Mary Frances Macon
Mrs. Mildred Palmer

Angel

Roland & Miriam Scheck

In Memory of Mary Spencer

Donor

Nancy Althaus
Barbara Hanson - Dance Unlimited
Jack Lynch
Phyllis & Katie Oldham
Frank & Gerry Schmidlin

The Bounds Family
Camille & Amy Khawand
Ernie & Elizabeth Matthews
Ed & Donna Prager
John & Linda Valenzano

Sponsor

Ron & Jackie Ayers
Andy & Marilyn Booth
Jane S. Buckley
Dr. Stephen L. Capelli
Donnie & Debra Cooper
Bernice Darling
Charles & Vivian Dick
Con & Barbara Dryden
Ed & Norma Fleischer
Mary Sue & Gordon Gladden
Joanne Hearne
Lester Huss
Jacqueline C. Jones
Rod & Pat Layton
Karen & Chuck Lutz
Gary & Brenda Maczys
Margy & Dick Meeks
Carroll Banks Mitchell
James G. Morris
Pat & David Oberholtzer
Marian L. Patterson
Marimargaret Reichert
Dr. Barbara JoAnn Seabrook
Lois Shockley-Wootten & Randy Wootten
Lillian & Lester Simpson
Ed & Barbara Stephens
Lee & Many Sterner
David & Ginny Studley
Beverley A. Thompson
Alice Tweedy
Kirk & Monique Vestal
Stephanie Willey
Elizabeth C. Wootten

John & Alison Bennish
Lynne Pollitt Bratten
John & Dottie Butler
Michael & Annette Conger
Bob & Dawn Cuff
John & Carol DeBardinis
Camilla Disharoon
Bob & Kathy Fisher
Kathleen V. Fox
Hugh K. Hanson
Fred & Shirley Herrmann
John & Sandra Innes
Adrianne & Lewis Kadushin
Jean & Ralph Lopez
Ken & Liz MacFarlane
Robin Mandelson
Jim & Coleen Mister
William P. Morin
Cathy & Bob Morrison
Janet & Bill Owens
Georgia Perdue
Harvey & Sheila Roth
Dr. & Mrs. William Seward
Bill & Betty Simms
William & Mary Slot
Ray Jackson & Patricia O. Stephens
Jeanne Stitt
Shirley Thomas Taylor
In Memory of Clifford Topham
Richard & Karyl Tyler
Dr. Debra Welsh
Chuck & Terri Woodward
Rich & Nancy Wright

Kate & Dan Zimmerman

Friend

Walter K. Allen II
Lynn B. Cathcart
Alfred C Huffer
Charles & Sharon Sorrentino
Dr. Arlene White

Barbara Benton
Anne J. Cuomo
Walter McCabe
Stephanie Taylor
Ann Wiseman

Create A Lasting Legacy



*Community
Foundation
of the Eastern Shore, Inc.*

You can make a legacy gift to your favorite charity. Even a small amount can have a big impact over time.

Community Foundation funds are able to provide grants to nonprofit organizations and charitable needs in perpetuity.

Whether you are considering a current gift, or a planned gift to benefit charity at some point in the future, we can help you create a lasting legacy.

**Connecting People Who Care with Causes
That Matter**

410-742-9911

www.cfes.org



Kitchen designs

THE SPECIALISTS

307A Civic Ave Salisbury MD 21804

410-742-9909

www.kitchendesignssalisbury.com